

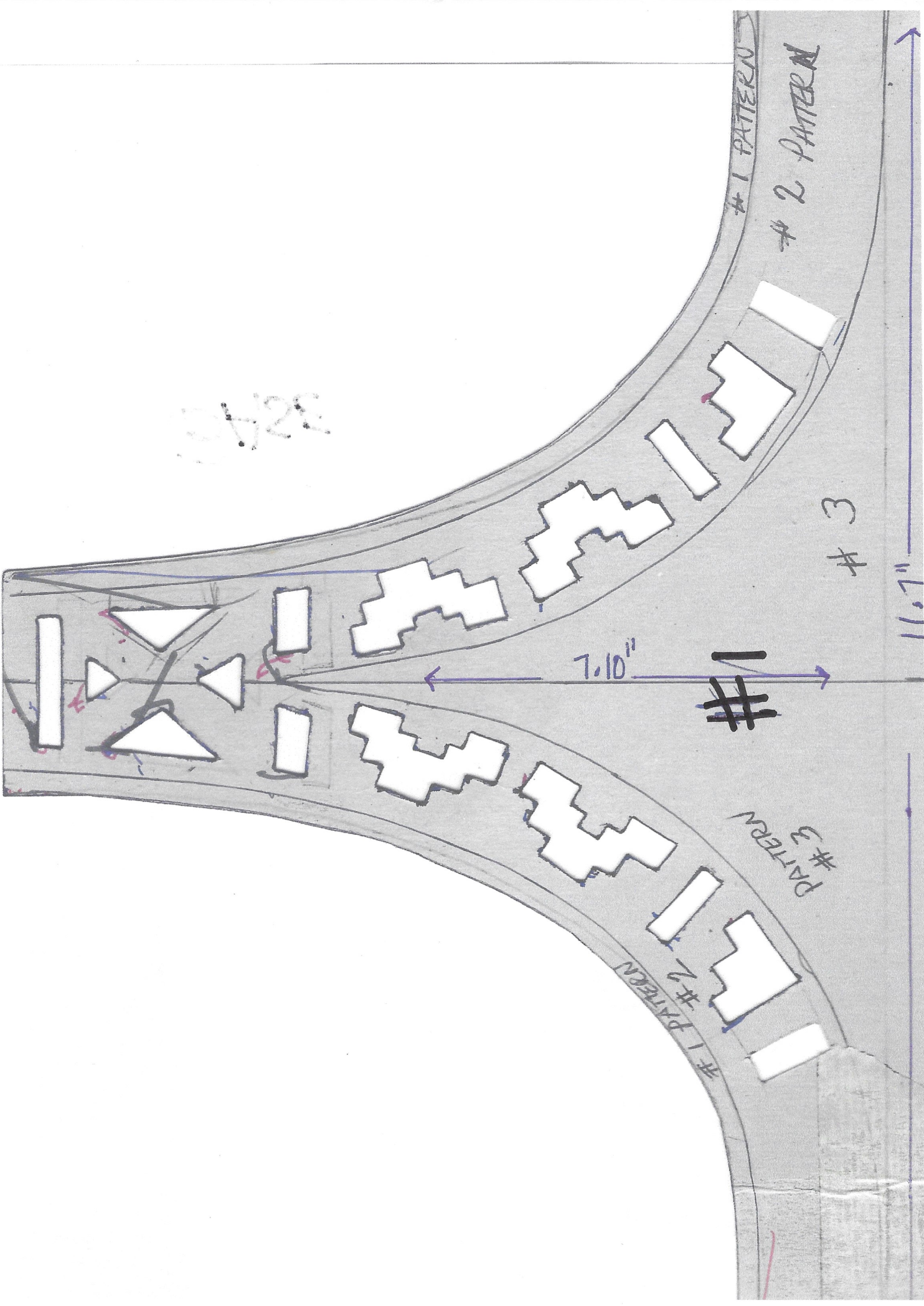
The INSTRUCTIONS for creating The Kachina Doll

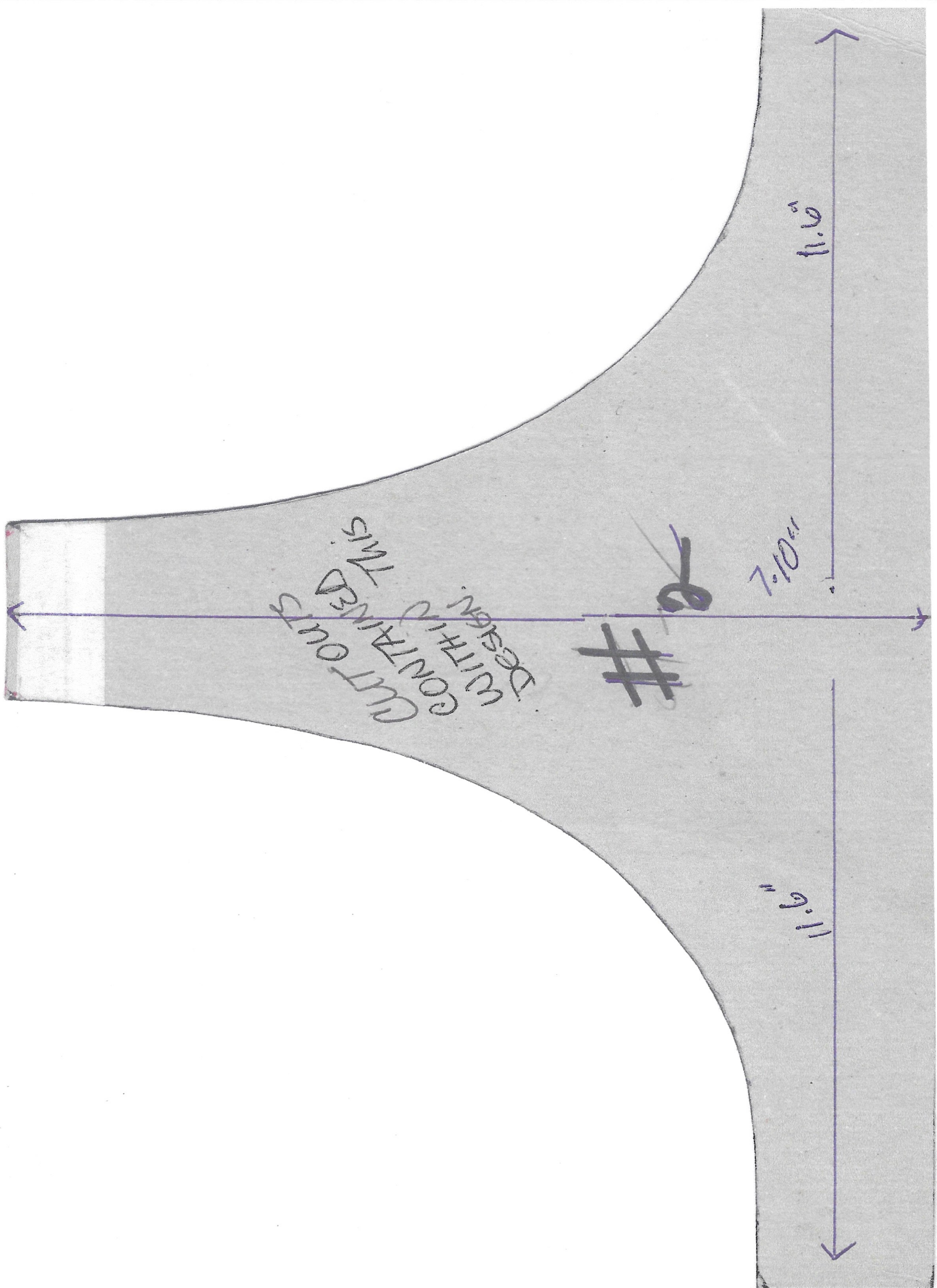


The doll in the photo is approximately 15" tall, head to base.

The cylinder is large enough that the bottom detail (photo labelled #3) is approximately 12" and would wrap around the bottom of the cylinder/tube.

32/28





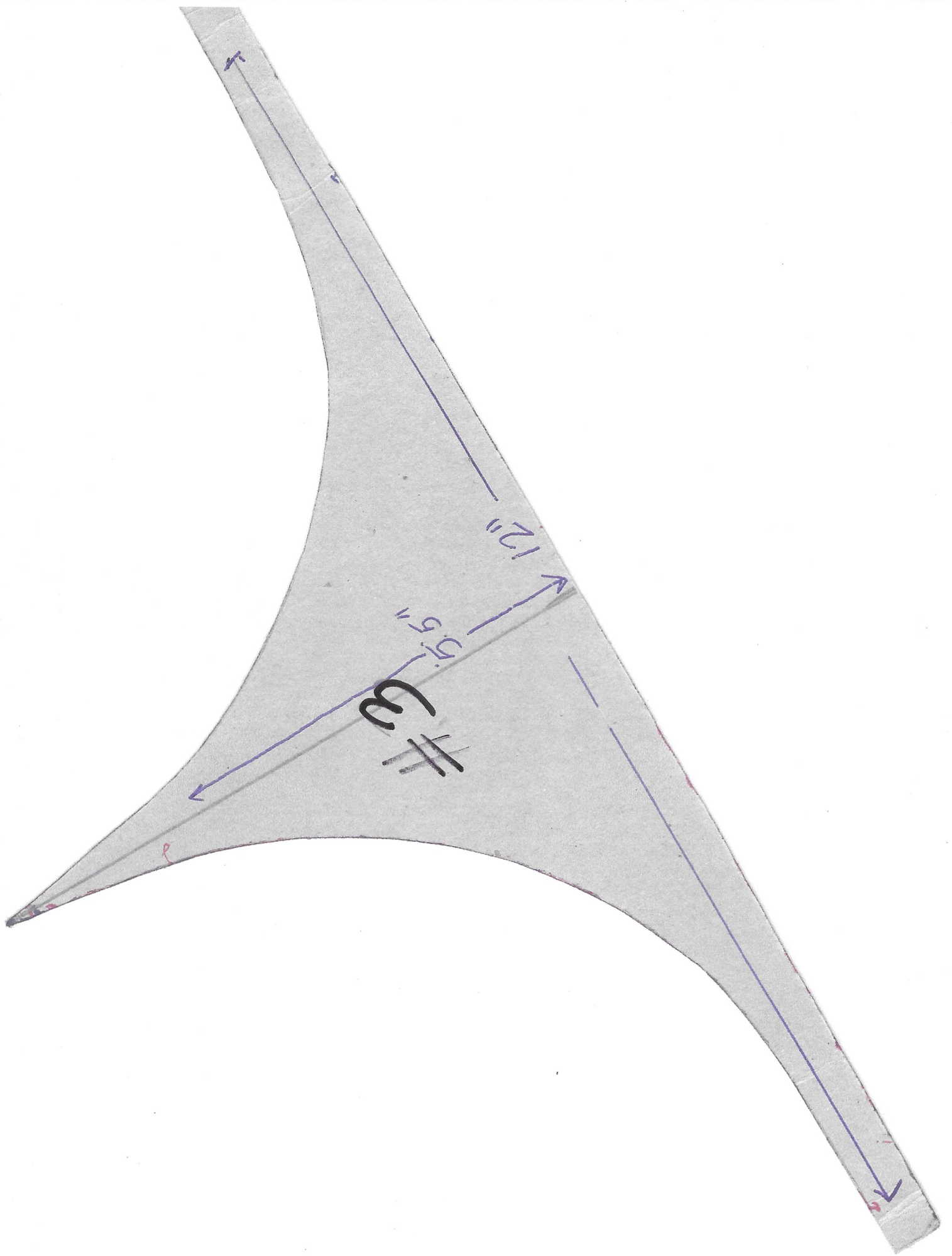
CUT OUTS
WITHIN THIS
DESIGN

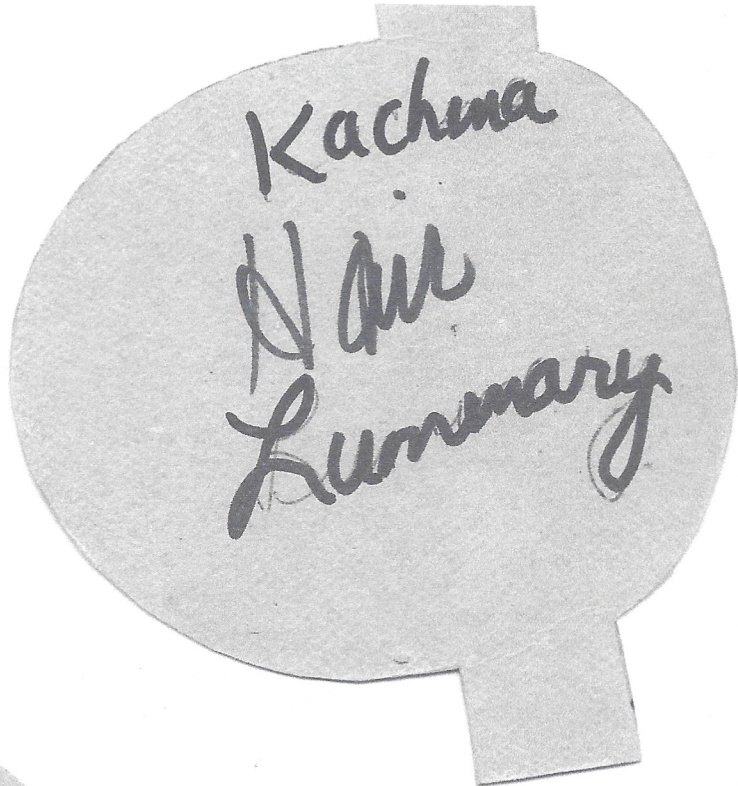
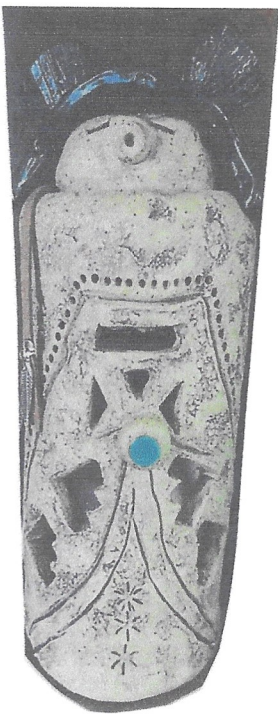
#2

7.10"

11.6"

11.6"





Kachina
Doll
Summary



Kachina
Doll
Head
+
BASE

